

# SAFETY ALERT

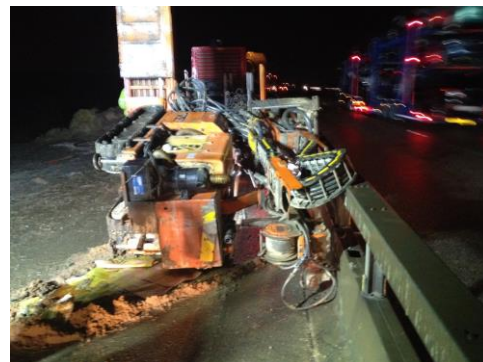
## Overtaken Drilling Rig

### What Happened?

A worker from our supply chain sustained injury whilst offloading a drilling rig. During the offloading operation the rig slipped from the delivery vehicle ramps, trapping the operator between the rig and the temporary barrier.

He was extremely “lucky” to walk away with severe bruising.

This alert has been produced to remind **EVERYONE** of their responsibilities relating to loading / offloading plant & equipment.



### Action to be taken:

#### Assess the Environment:

- ✓ Check for obvious hazards such as other vehicles, adjacent structures, pedestrians, overhead cables etc.
- ✓ Confirm that the ground for loading & unloading is suitable for vehicles to access (consider the 600mm deflection zone for temporary crash barrier).
- ✓ Loading / offloading on inclines must be avoided.
- ✓ Consider the effects of bad weather (snow, ice, heavy rain) on traction between the machine & the trailer.

#### Prepare the rig/machine:

- ✓ At the planning stage specify equipment with remote or umbilical controls in order to separate the operator and machine whenever possible.
- ✓ Make sure the machine is set up in accordance with operator's manual. Tracks are retracted & secure.
- ✓ All security measures including locking pins are to be fitted prior to moving.

#### Trailer set up:

- ✓ Position trailer on firm level ground.
- ✓ Inspect the bed of the trailer for holes or signs of damage and that it is not slippery.
- ✓ Track mats must always be used where there is steel on steel e.g. steel tracks on a steel trailer bed. This will reduce the risk of the machine/ rig sliding.
- ✓ For larger rigs, use packers under rear of trailer to relieve pressure on axles & to ensure level loading/unloading.
- ✓ Ramps must be positioned correctly in relation to the width of the machine being offloaded/loaded.
- ✓ If a trailer winch is fitted, it should be used to steady the rig.

#### The Banksman:

- ✓ At least one banksman must be in attendance to assist with the safe loading/unloading of plant, but you may need more.
- ✓ The banksman must not be distracted.
- ✓ The banksman must stand in a position so that they have a clear view of the operation to facilitate both clear communication and escape in case of emergency.

### Further guidance:

1. [Delivery Hub health, safety and environment Raising the bar 25 'Loading and unloading vehicles'](#)
2. SHE-T-403 Contract Transport Logistics Plan.

